

Research article

Open Access

## A selective cyclic integrin antagonist blocks the integrin receptors $\alpha_v\beta_3$ and $\alpha_v\beta_5$ and inhibits retinal pigment epithelium cell attachment, migration and invasion

Stephan Hoffmann<sup>\*1,3</sup>, Shikun He<sup>1,2</sup>, Manlin Jin<sup>2</sup>, Marianne Ehren<sup>4</sup>, Peter Wiedemann<sup>3</sup>, Stephen J Ryan<sup>1</sup> and David R Hinton<sup>1,2</sup>

Address: <sup>1</sup>Doheny Eye Institute, Departments of Ophthalmology, Keck School of Medicine, University of Southern California 1355 San Pablo Street, Los Angeles 90033, CA, USA, <sup>2</sup>Department of Pathology, Keck School of Medicine, University of Southern California, 2011 Zonal Ave HMR 209, Los Angeles, CA 90033, USA, <sup>3</sup>Department of Ophthalmology, University of Leipzig, Liebigstrasse 10–14, 04103 Leipzig, Germany and <sup>4</sup>Berufsgenossenschaftliche Kliniken Bergmannsheil, University of Bochum, Department of Internal Medicine I, Bürkle-de-la-Camp-Platz 1, D-44789 Bochum, Germany

Email: Stephan Hoffmann\* - HoffmS@web.de; Shikun He - SHE@doheny.org; Manlin Jin - Mjin@doheny.org; Marianne Ehren - Marianne.Ehren@web.de; Peter Wiedemann - wiedeman@medizin.uni-leipzig.de; Stephen J Ryan - SRyan@doheny.org; David R Hinton - DHinton@doheny.org

\* Corresponding author

Published: 29 June 2005

Received: 09 March 2005

BMC Ophthalmology 2005, 5:16 doi:10.1186/1471-2415-5-16

Accepted: 29 June 2005

This article is available from: <http://www.biomedcentral.com/1471-2415/5/16>

© 2005 Hoffmann et al; licensee BioMed Central Ltd.

This is an Open Access article distributed under the terms of the Creative Commons Attribution License (<http://creativecommons.org/licenses/by/2.0>), which permits unrestricted use, distribution, and reproduction in any medium, provided the original work is properly cited.

### Abstract

**Background:** Proliferative vitreoretinopathy (PVR) is a leading cause of blindness after failed retinal reattachment surgery. PVR is characterized by the proliferation, migration and contraction of retinal pigmented epithelial cells (RPE), and these cellular responses are influenced by the expression and function of integrin receptors. The effect of a cyclic integrin antagonist containing the amino acid sequence Arg-Gly-Asp-D-Phe-Val (RGDFV), specific for the integrin receptors  $\alpha_v\beta_3$  and  $\alpha_v\beta_5$ , was investigated on basic fibroblast growth factor (bFGF), platelet derived growth factor-BB (PDGF-BB), and serum induced human RPE proliferation, migration, invasion and attachment to the extracellular matrix. Furthermore, the effects of bFGF and PDGF-BB regulated expression of integrins  $\alpha_v\beta_3$  and  $\alpha_v\beta_5$  on RPE cells was examined.

**Methods:** The effect of a cyclic integrin antagonist and a control peptide (0.01  $\mu\text{g/ml}$  to 300  $\mu\text{g/ml}$ ) was investigated on serum or cytokine (bFGF or PDGF-BB pretreatment) induced human fetal RPE cell proliferation by  $\text{H}^3$ -thymidine uptake. The effect of the cyclic integrin antagonist on RPE cell attachment onto different extracellular matrices (laminin, collagen IV, fibronectin), RPE cell invasion stimulated by PDGF-BB or serum, and migration stimulated by PDGF-BB, vascular endothelial growth factor (VEGF) or serum was explored. PDGF-BB and bFGF modulation of the integrin receptors  $\alpha_v\beta_3$  and  $\alpha_v\beta_5$  was evaluated by flow cytometry.

**Results:** The integrin antagonist did not inhibit DNA synthesis stimulated by serum, bFGF, or PDGF-BB treatment. RPE attachment onto fibronectin was inhibited in a concentration range of 1–10  $\mu\text{g/ml}$  ( $p < 0.05$ ). Attachment of the RPE cells onto collagen IV and laminin was inhibited in a range of 3–10  $\mu\text{g/ml}$  ( $p < 0.05$ ). Serum and PDGF-BB stimulated migration was inhibited by the cyclic integrin antagonist in a concentration range of 1–10  $\mu\text{g/ml}$  ( $p < 0.05$ ). Furthermore, the cyclic integrin antagonist inhibited PDGF-BB stimulated RPE cell invasion through fibronectin (3  $\mu\text{g/ml}$ : 66% inhibition,  $p < 0.001$ ). In each of these experiments, the control peptides had no significant

effects. PDGF-BB and bFGF pretreatment of RPE cells increased the expression of integrin receptors  $\alpha_v\beta_3$  (bFGF: 1.9 fold, PDGF-BB: 2.3 fold) and  $\alpha_v\beta_5$  (bFGF: 2.9 fold, PDGF-BB: 1.5 fold).

**Conclusion:** A selective inhibition of the integrin receptors  $\alpha_v\beta_3$  and  $\alpha_v\beta_5$  through a cyclic integrin antagonist is able to inhibit RPE cell attachment, migration and invasion. Since these steps are of importance for the progression of PVR, a cyclic integrin antagonist should be further evaluated for the treatment of this disease.

## Background

Integrins are a family of heterodimeric, non-covalently bound cell surface receptors, which mediate cell-cell and cell to extracellular matrix (ECM) adhesion. They are transmembrane glycoproteins consisting of a larger  $\alpha$  and a smaller  $\beta$  subunit. In mammals, 18  $\alpha$ - and 8  $\beta$  integrin genes encode polypeptides that combine to form 24  $\alpha\beta$  heterodimeric receptors [1]. By mediating cell-cell and cell-matrix contact, the integrins are involved in a spectrum of physiologic and pathologic processes. Integrin expression is modulated by several cytokines, growth factors and the extracellular matrix in different cell types [2].

The integrins  $\alpha_v\beta_3$  and  $\alpha_v\beta_5$  have been shown to be of particular significance for the progression of neovascularization. Both integrin receptors contain RGD sequences containing the amino acid sequence Arg-Gly-Asp. Vitronectin receptor integrins of the  $\alpha_v$  - chain subfamily interact with their target proteins via the tripeptide sequence RGD (NH<sub>2</sub>-arginine-glycine-aspartic acid-COOH) [3,4]. The blockage of these RGD receptor sequences induces endothelial cell apoptosis by inhibiting their binding to the ECM [5,6]. In addition fibroblast attachment onto fibrinogen, a substep involved in wound healing, is inhibited by blockage of the  $\alpha_v\beta_3$  integrin receptor [7]. Therefore, the integrin  $\alpha_v\beta_3$  plays a critical role during wound repair as an adhesion receptor and as a signaling receptor [8]. As an adhesion receptor, it has the exceptional ability to bind vitronectin, fibronectin and fibrinogen, the three major proteins present in the wound provisional matrix [9].

In proliferative vitreoretinopathy (PVR), a disease of the posterior eye characteristically induced by trauma or failed retinal reattachment surgery, integrins are also of importance for the progression of the disease [10,11]. PVR, an exaggerated wound healing process, is characterized by the proliferation, migration and contraction of retinal pigment epithelial cells (RPE), fibroblasts, glial cells and macrophages. PVR membranes are formed on, or under the sensory retina; their contraction may lead to retinal detachment and blindness. RPE cells play a dominant role in the pathobiology of the disease [12]. Growth factors including basic fibroblast growth factor (bFGF), platelet derived growth factor-BB (PDGF-BB), and vascular endothelial growth factor (VEGF), and the ECM mole-

cule fibronectin, regulate proliferation, migration and invasion of the RPE cell and are expressed in PVR membranes [12,13]. Fibronectin is an adhesive substrate for both the integrin receptors  $\alpha_v\beta_3$  and  $\alpha_v\beta_5$  [14]. Several studies have identified integrins  $\alpha_v\beta_3$ ,  $\alpha_v\beta_5$ , integrin alpha subunits 2,3,4,5,6, V, and integrin beta subunits 1, 2, 3 on RPE cells and cells within PVR membranes [15-17]. The ECM-cell interactions are thought to be mediated largely through this family of cell surface receptors. Because cell-ECM interaction is important in the process of wound healing, one could predict that integrins would be actively involved in the pathogenesis of PVR. For PVR, it was shown *in vivo*, that tractional retinal detachment could be inhibited [11] by blockage of integrin-ECM binding by an RGD containing disintegrin.

Peptide antagonists specific for individual integrins have been developed, including cyclic RGD peptides selective for the  $\alpha_v$  integrin [18], the  $\alpha_v\beta_3$  integrin [19], and the  $\alpha_v\beta_5$  integrin [18-21]. Sequence alterations in the backbone of the RGD-containing cyclic peptides that result in conformational differences in the interatomic distance between the C $_{\beta}$  atoms of Arg and Asp, have been shown to correlate with selective peptide recognition [18,22,23].

In this study we investigated the modulatory effect of the cytokines PDGF-BB and bFGF on the expression of the RGD containing integrin receptors  $\alpha_v\beta_3$  and  $\alpha_v\beta_5$  on human fetal RPE cells. Furthermore, the effect of a specific cyclic integrin antagonist that blocks the integrin receptors  $\alpha_v\beta_3$  and  $\alpha_v\beta_5$ , was investigated for its effects on RPE attachment, proliferation, migration and invasion. A specific cyclic integrin antagonist was chosen for its higher affinity and stronger binding capacity to the  $\alpha_v\beta_3$  and  $\alpha_v\beta_5$  integrins compared to a non-cyclic integrin antagonist [24,18].

## Methods

All cell culture solutions, media and ECM molecules (fibronectin, laminin and vitronectin) were purchased from Sigma (Sigma, St. Louis, MO).

### Isolation and culture of human RPE cells

Human RPE cells were isolated from fetal donor eyes (gestation time over 22 weeks) which were obtained from the Anatomic Gift foundation (Woodbine, GA) as has been

described [25]. RPE cells were seeded onto laminin-coated 6 well plates (Fisher Scientific, Tustin, CA) using DMEM with 10 % fetal bovine serum, 1 % penicillin/streptomycin and glutamine. Cells from passage 3 to 5 were used in all experiments.

#### **Synthesis of the cyclic integrin antagonist and its control peptide**

The cyclic integrin antagonist RGDfV, specific for the inhibition of integrins  $\alpha_v\beta_3$  and  $\alpha_v\beta_5$  [18-21] and the control peptide RADfV were synthesized as described [6] at the USC/ Norris Cancer Peptide synthesis facility. The peptides were dissolved in Hank's Balanced Salt Solution (HBSS), and stored at  $-80^\circ\text{C}$ . HPLC analysis revealed a purity > 99% of the synthesized peptide.

#### **Flow cytometry**

RPE cells (30,000 cells/well) were treated for 5 days with the cytokines bFGF and PDGF-BB at a concentration of 10 ng/ml in 6 well plates. Cells were detached, fixed with 4 % paraformaldehyde, blocked with 5 % goat serum for 30 minutes, centrifuged at  $4^\circ\text{C}$ , and incubated with a monoclonal mouse antibody against  $\alpha_v\beta_3$  or  $\alpha_v\beta_5$  (5  $\mu\text{g/ml}$ ) (Chemicon, CA) for one hour. After washing, a fluorescein conjugated secondary antibody (Chemicon, CA) directed against the mouse antibodies was added in a dilution of 1:100 for one hour. The expression of the integrin receptors  $\alpha_v\beta_3$  or  $\alpha_v\beta_5$  was measured using a fluorescent-activated cell sorter (FACStar plus, Becton Dickinson, Mountain View, CA). Forward and side light scatter was used to gate the desired scattered events (RPE cells) from dead cells and debris. The fluorescent index was determined by multiplying the percentage of cells by their mean fluorescence. At least 10,000 cells were evaluated/experiment and all experiments were performed in triplicate.

#### **Cell counting and viability studies**

Subconfluent, bFGF (10 ng/ml) or PDGF-BB (10 ng/ml) pre-stimulated RPE cells were seeded at a density of  $8 \times 10^4$  cells per well in 6 well plates containing DMEM with 10 % FBS and the cyclic integrin antagonist or the control peptide (0.01  $\mu\text{g/ml}$ , 0.1  $\mu\text{g/ml}$ , 1  $\mu\text{g/ml}$ , 30  $\mu\text{g/ml}$  and 300  $\mu\text{g/ml}$ ). The cells were exposed during the proliferation assay to 10% FBS or the cytokines bFGF and PDGF-BB (10 ng/ml). After 3 days of culture, the cell number was determined using a hemocytometer. The experiments were performed six times, each in triplicate. Cell viability was estimated by observation of cell morphology and by exclusion of 0.4 % trypan blue solution [26].

#### **$^3\text{H}$ -thymidine uptake**

RPE cells (10,000 cells/well) were seeded into DMEM with 10 % FBS in 24 well plates with the cyclic integrin antagonist or the control peptide (0.01  $\mu\text{g/ml}$ , 0.1  $\mu\text{g/ml}$ ,

1  $\mu\text{g/ml}$ , 30  $\mu\text{g/ml}$  and 300  $\mu\text{g/ml}$ ). To determine a possible stronger effect of the cyclic integrin antagonist on RPE cell proliferation, cells were pre-stimulated for 5 days with bFGF (10 ng/ml) or PDGF-BB (10 ng/ml) (R&D Systems, Minneapolis, MN) to induce an upregulation of the integrin receptors  $\alpha_v\beta_3$  or  $\alpha_v\beta_5$ . After the pre-incubation, cells were seeded in DMEM with 10 % FBS, with the cyclic integrin antagonist or control peptide, and bFGF (10 ng/ml) or PDGF-BB (10 ng/ml). Cells were treated for three days with the peptides, then  $^3\text{H}$ -thymidine uptake was measured as described previously [25]. Results are presented as the percentage of control values.

#### **Migration assay**

Migration was performed in a modified Boyden chamber (Falcon, Becton Dickinson Labware, Franklin Lakes, NJ). Subconfluent RPE cells, which have been pre-exposed to the cyclic integrin antagonist peptide (0.001 ng/ml, 0.01 ng/ml, 0.1 ng/ml, 1 ng/ml, 3 ng/ml and 10 ng/ml) or the control peptide (10  $\mu\text{g/ml}$ ) over night were seeded into DMEM with 1 % FBS into the upper part of a Boyden chamber (50,000 cells/chamber). The cyclic integrin antagonist was added directly to the upper part of the chamber (0.001 ng/ml, 0.01 ng/ml, 0.1 ng/ml, 1 ng/ml, 3 ng/ml, or 10 ng/ml). To evaluate nonspecific activity of the integrin antagonist, a control peptide (10  $\mu\text{g/ml}$ ) was used. The lower part of the chamber was filled with DMEM with 1 % FBS containing the chemoattractant PDGF-BB (10 ng/ml) or the ECM molecule fibronectin (30 ng/ml). RPE cells were incubated for 8 hours in a humidified  $\text{CO}_2$ -incubator. Then the cells in the upper part were scraped away and the membrane was fixed with 1/2 strength Karnovsky's solution and stained with 0.25 % Richardson's solution. RPE cells on the lower side of the membrane were counted with the help of an inverted microscope and a grid (Carl Zeiss, Jena, Germany) in five random high power fields (200 X) in triplicate.

#### **Cell attachment**

Ninety-six well plates were coated with the ECM molecules laminin, fibronectin or collagen IV (25  $\mu\text{g/ml}$ ). RPE cells were pre-incubated with the cyclic integrin antagonist (concentrations as above) or control peptide (10  $\mu\text{g/ml}$ ) over night. Then  $15 \times 10^3$  cells, suspended in 100  $\mu\text{l}$  DMEM with the cyclic or control peptide were seeded in each well and allowed to attach for 60 minutes. A tetrazolium MTT [3-(4,5-dimethylthiazolyl-2)-2,5-diphenyltetrazolium bromide] solution (20  $\mu\text{l/well}$ ) (Boehringer Mannheim, Indianapolis, IN, USA) was added for 5 hours of incubation. Then the supernatants were decanted, 150  $\mu\text{l}$  of 100% DMSO added, and the cells were placed on a shaker for 10 minutes. Absorbance of the cells was measured at 550 nm with a Dynatech MR 600 spectrophotometric microplate reader.

### **Invasion assay**

RPE cell invasion was examined in a modified Boyden chambers. The insert membrane was coated overnight with fibronectin (25 µg/ml). Subconfluent RPE cells were pretreated overnight with the cyclic integrin antagonist (3 µg/ml) or the control peptide (3 µg/ml). An RPE cell suspension (50,000 cells/0.1 ml) in DMEM with 0.4 % FBS and 3 µg/ml cyclic integrin antagonist or control peptide was added into the upper part of the chamber. 600 µl DMEM with 0.4% FBS and PDGF-BB (10 µg/ml) was added into the lower part of the chamber. Invasion was measured with and without PDGF-BB stimulation after 5 hours at 37°C (95 % air/ 5 % CO<sub>2</sub>). After PBS washing and methanol fixation (10 minutes at 4°C), counterstaining with hematoxylin was performed. Cells in the upper chamber were wiped away. RPE cells that invaded the lower surface of the membrane were quantified by cell counting (320 × magnification).

### **Statistical analysis**

All experiments were repeated in triplicate. Standard deviations and averages were calculated. The data obtained were analyzed for significance using one way analysis of variance (ANOVA). Data with a p-value of less than 0.05 were considered to be statistically significant.

## **Results**

### **The cyclic integrin antagonist does not inhibit RPE cell proliferation**

The RPE cells were stimulated to incorporate thymidine by either 10% serum or by 10 ng/ml bFGF or 10 ng/ml PDGF-BB (p < 0.01). Neither the integrin antagonist, nor control peptide showed any significant effect on serum, PDGF-BB or bFGF stimulated DNA synthesis. (data not shown). In addition, cell counting showed no effects of the integrin antagonist or the control peptide on serum or cytokine stimulated proliferation. Furthermore, a lack of toxicity for the integrin antagonist and the control peptide in the concentration range tested (0.01 µg/ml, 0.1 µg/ml, 1 µg/ml, 30 µg/ml and 300 µg/ml) was determined by use of the trypan blue exclusion assay (data not shown).

### **bFGF and PDGF-BB upregulate surface expression of $\alpha_v\beta_3$ and $\alpha_v\beta_5$**

Pre-stimulation of RPE cells for 5 days with the cytokines PDGF-BB and bFGF (10 ng/ml) increased the expression of the integrin receptors  $\alpha_v\beta_3$  and  $\alpha_v\beta_5$  (Fig. 1; representative flow cytometric study). Incubation with 10 ng/ml bFGF upregulated the expression of  $\alpha_v\beta_3$  (1.9 fold) and strongly enhanced the expression of  $\alpha_v\beta_5$  (2.9 fold). PDGF-BB (10 ng/ml) strongly enhanced  $\alpha_v\beta_3$  (2.3 fold), and less strongly upregulated surface expression of  $\alpha_v\beta_5$  (1.5 fold).

### **The cyclic integrin antagonist inhibits RPE attachment onto ECM**

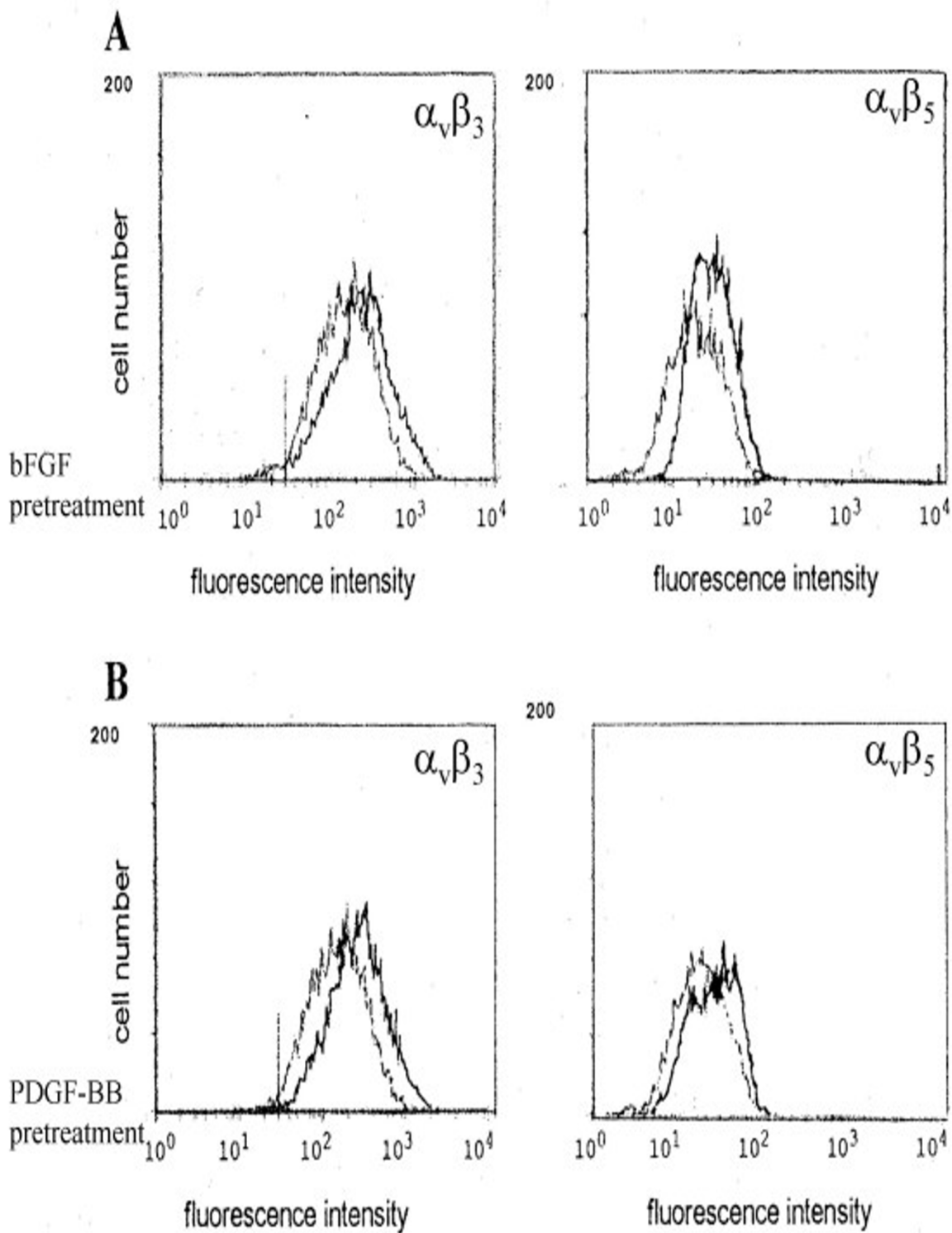
RPE cell attachment onto fibronectin was inhibited significantly in the range of 1 to 10 µg/ml of cyclic integrin antagonist (p < 0.05) (Fig. 2A). A concentration of 10 µg/ml control peptide showed no effect. RPE cell attachment was inhibited 18 % with 1 µg/ml (p = 0.03), 23 % with 3 µg/ml (p < 0.005) and 27 % with 10 µg/ml (p < 0.001) onto fibronectin. An ID<sub>50</sub> of 18.5 µg/ml cyclic integrin antagonist was calculated for the RPE cell attachment onto fibronectin. The attachment onto collagen IV was inhibited 25 % with 3 µg/ml (p < 0.001), and 29 % with 10 µg/ml (p < 0.001). Lower concentrations showed no significant effect. An ID<sub>50</sub> of 17.2 µg/ml cyclic peptide was calculated for RPE cell attachment onto collagen IV. Attachment onto laminin was inhibited by the cyclic integrin antagonist in the range of 3–10 µg/ml (3 µg/ml, 27 % inhibition (p < 0.001); 10µg/ml: 23 % inhibition (p < 0.001). An ID<sub>50</sub> of 21.7 µg/ml was calculated for the inhibition of RPE cell attachment onto laminin.

### **The cyclic integrin antagonist inhibits RPE cell migration**

The ECM component fibronectin (30 ng/ml) induced chemotaxis when placed as a soluble agent in the lower part of the Boyden chamber (Fig. 2B). This migratory response was inhibited by the cyclic integrin antagonist but not by the control peptide. RPE cell migration was inhibited in a concentration range of 1–10 µg/ml (1µg/ml, 18 % inhibition (p < 0.001); 3 µg/ml, 23 % inhibition (p < 0.001); 10 mg/ml, 27 % inhibition (p < 0.001)). An ID<sub>50</sub> of 18.5 µg/ml integrin antagonist was calculated for the serum induced migration. The migratory response induced by PDGF-BB (10 ng/ml) (93 % stimulation of migration) was diminished by the cyclic integrin antagonist. (1µg/ml, 26 % inhibition (p < 0.001); 3 µg/ml, 66 % inhibition (p < 0.001); and 10µg/ml, 74 % inhibition (p < 0.001)). An ID<sub>50</sub> of 5.8 µg/ml was calculated for the inhibition of PDGF-BB induced migration of RPE cells. VEGF induced a migratory response of RPE cells by 39 %. This migratory response was inhibited by the cyclic integrin antagonist in a concentration range of 3–10 µg/ml (p < 0.01).

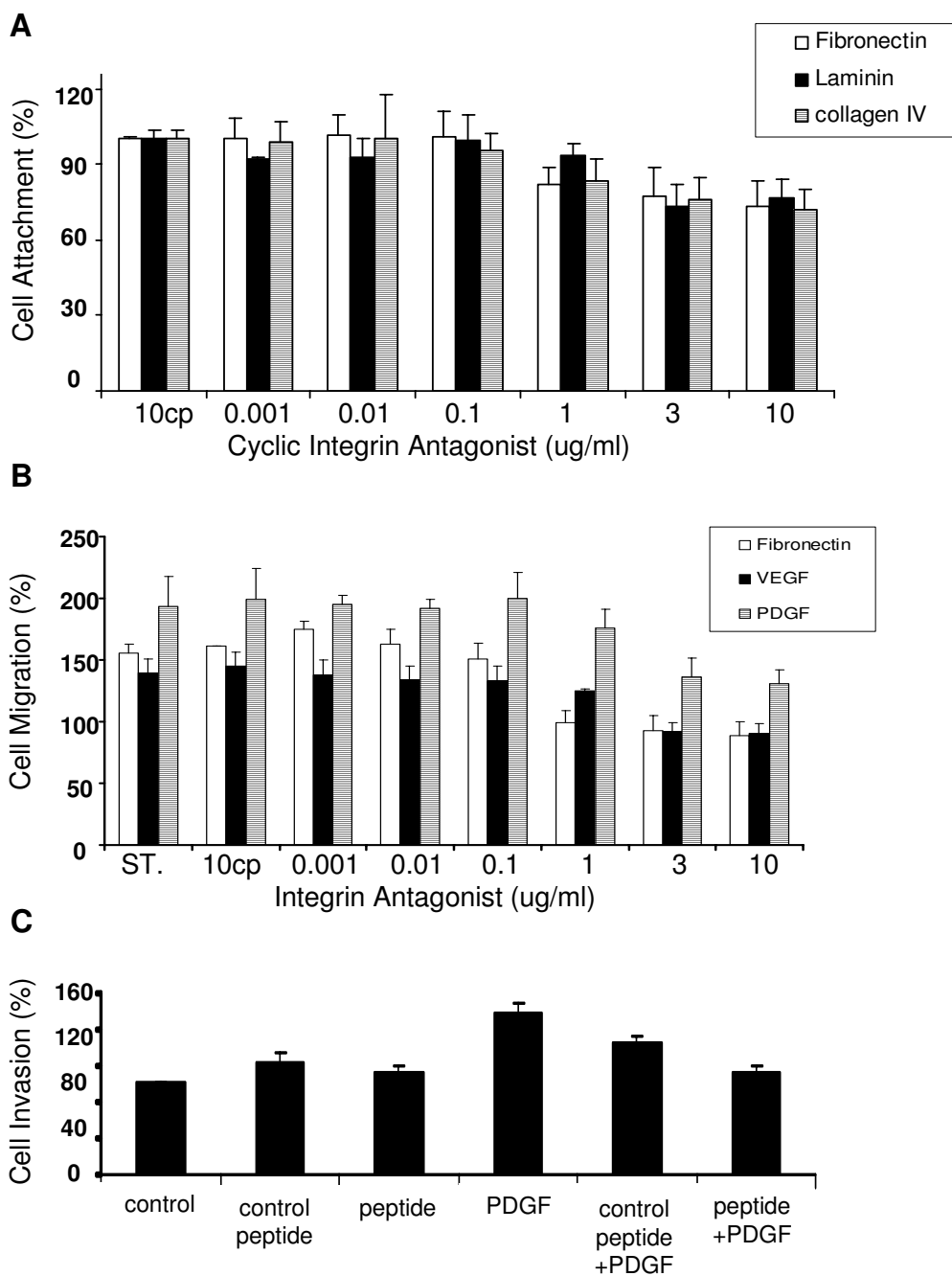
### **The cyclic integrin antagonist inhibits PDGF-BB stimulated invasion through fibronectin**

PDGF-BB strongly stimulated RPE cell invasion (77 %, (p < 0.001)) through fibronectin coated onto the lower surface of a membrane insert in a modified Boyden chamber. This invasion was inhibited by the cyclic integrin antagonist (3 µg/ml, 66 % inhibition (p < 0.001)). The control peptide had no significant effect on invasion (Fig. 2C). An ID<sub>50</sub> of 2.3 µg/ml was calculated for the effects of the cyclic integrin antagonist on PDGF-BB induced RPE invasion through fibronectin.



**Figure 1**

**A.** Expression of the integrin receptors  $\alpha_v\beta_3$  and  $\alpha_v\beta_5$  after pretreatment with the cytokine bFGF in a concentration of 10 ng/ml for 5 days. **B.** Expression of the integrin receptors  $\alpha_v\beta_3$  and  $\alpha_v\beta_5$  after pretreatment with the cytokine PDGF-BB in a concentration of 10 ng/ml for 5 days.



**Figure 2**

**A.** RPE attachment on fibronectin, laminin and collagen IV. The cells were pretreated before the assay with the cyclic integrin antagonist, or the control peptide (10 µg/ml). Untreated RPE cells were used in addition as a standard (ST). **B.** RPE cell migration induced by PDGF-BB, VEGF and fibronectin. The effect of the cyclic integrin antagonist or the control peptide (cp) on migration is shown. (ST = untreated RPE cells) **C.** Effect of the cyclic integrin antagonist, (3 µg/ml) or the control peptide on RPE invasion through fibronectin. Cell invasion through fibronectin (F) was stimulated with PDGF-BB (10 ng/ml). Nonspecific effects were excluded by the use of a cyclic control peptide. DMEM without PDGF-BB was used as a control in the assay.

## Discussion

These data provide support for the suggestion that inhibition of the integrin receptors  $\alpha_v\beta_3$  and  $\alpha_v\beta_5$  by a specific cyclic integrin antagonist is feasible for inhibiting RPE cell attachment, migration and invasion and may serve as an adjunctive therapy for disorders such as PVR. Integrins have been shown to influence cell signaling pathways that promote cell proliferation in concert with cytokines [27]. Interestingly, our data show that cyclic integrin inhibition of  $\alpha_v\beta_3$  and  $\alpha_v\beta_5$  had no effect on serum, PDGF-BB or bFGF induced proliferation of RPE. Since we also show that bFGF and PDGF-BB upregulate both  $\alpha_v\beta_3$  and  $\alpha_v\beta_5$ , and that proliferation is not inhibited in these stimulated cells, we can infer that the lack of effect of the cyclic peptide on proliferation is not due to lack of integrin expression. Consistent with the lack of effect on proliferation, we found that the cyclic integrin inhibitor did not induce significant cell death. This suggests that in the conditions studied here, the effect of integrin inhibition by the cyclic peptide on survival and proliferation of RPE cells may differ from previously described effects on endothelial cells [28], specific tumor cells [29] and mammary epithelial cells [30].

Cell attachment of RPE cells onto fibronectin, laminin and collagen IV was inhibited by the cyclic integrin antagonist. Because substrate attachment and interaction is important for activated RPE function [31], it is reasonable to predict that anti-adhesive therapy holds promise for the therapy of PVR. The cyclic integrin antagonist has been shown previously to inhibit specific ligand binding or cell adhesion events mediated by  $\alpha_v\beta_3$  or  $\alpha_v\beta_5$  [18]. Blockage of RPE attachment onto laminin, collagen IV and fibronectin is of specific interest, because of the strong expression of these matrix proteins in PVR [12]. The ECM fibronectin reacts with the  $\alpha_v\beta_3$  receptor with high specificity and affinity, supporting cell adhesion to this matrix protein. The  $\alpha_v\beta_5$  receptor binds in a similar way to fibronectin [32]. The blockage of  $\alpha_v\beta_3$  and  $\alpha_v\beta_5$  thus provides a reasonable explanation for the decreased attachment of RPE onto collagen IV, fibronectin and laminin in the presence of the inhibitory cyclic peptide.

RPE cell migration is another important process in the development of PVR. Without migration, RPE cells would not gain access to the vitreous and form vitreoretinal membranes. For RPE cells, it was shown previously that monoclonal antibody inhibition of integrin subunit  $\beta_1$  inhibits RPE cell migration from wound edges in organ culture [14]. Integrin signaling results in actin cytoskeleton polymerization, which in turn regulates cell shape and motility [33]. The  $\alpha_v\beta_3$  receptor appears to be involved in pathways that regulate intracellular pH and intracellular  $Ca^{2+}$  [34] and may therefore be involved in migration in response to motility factors and extracellular

matrix components [35]. The same range of concentration of the cyclic peptide inhibited migration induced by both soluble fibronectin and PDGF-BB. This result may in part be due to the finding that PDGF-BB induced migration is mediated by signaling pathways that are also used by integrin receptors [36-38].

The cyclic integrin antagonist had a particularly strong effect on RPE invasion into fibronectin. This may be due to the concurrent effects of the peptide on the inhibition of adhesion, migration and proteolytic activity since each of these steps may play a critical role in the invasion of the ECM.

The cyclic integrin antagonist described here blocks both  $\alpha_v\beta_3$  and  $\alpha_v\beta_5$ . In contrast, highly selective integrin antagonists such as LM609 block only  $\alpha_v\beta_3$ . Therefore, a stronger inhibitory effect of the cyclic integrin antagonist can be expected as has been shown in tumors [36]. While increased specificity could result in lower toxicity, we did not find that the cyclic integrin antagonist inhibited thymidine incorporation, or that it increased trypan blue uptake in the concentrations tested.

## Conclusion

The cyclic integrin antagonist RGDfV inhibits RPE migration, attachment and invasion, and should be further investigated as a potential adjuvant pharmacological treatment for PVR.

## Competing interests

The author(s) declare that they have no competing interests

## Authors' contributions

All authors have been involved in the experimental design, data collection and manuscript preparation. The final manuscript has been read and approved by all authors.

## Acknowledgements

Supported in part by grant EY02061 and by core grant EY03040 from the National Institute of Health and a grant from the German research association (WI 880/9-1).

## References

1. Hynes RO: **Integrins: bidirectional, allosteric signaling machines.** *Cell* 2002, **110**(6):673-687.
2. Kim LT, Yamada KM: **The regulation of expression of integrin receptors.** *Proc Soc Exp Biol Med* 1997, **214**(2):123-131.
3. Smith JW, Cheresch DA: **Integrin (alpha v beta 3)-ligand interaction. Identification of a heterodimeric RGD binding site on the vitronectin receptor.** *J Biol Chem* 1990, **265**(4):2168-2172.
4. Ruoslahti E, Pierschbacher MD: **New perspectives in cell adhesion: RGD and integrins.** *Science* 1987, **238**(4826):491-497.
5. Brooks PC, Montgomery AM, Rosenfeld M, Reisfeld RA, Hu T, Klier G, Cheresch DA: **Integrin alpha v beta 3 antagonists promote tumor regression by inducing apoptosis of angiogenic blood vessels.** *Cell* 1994, **79**(7):1157-1164.

6. Hammes HP, Brownlee M, Jonczyk A, Sutter A, Preissner KT: **Subcutaneous injection of a cyclic peptide antagonist of vitronectin receptor-type integrins inhibits retinal neovascularization.** *Nat Med* 1996, **2(5)**:529-533.
7. Gailit J, Clarke C, Newman D, Tonnesen MG, Mosesson MW, Clark RA: **Human fibroblasts bind directly to fibrinogen at RGD sites through integrin alpha(v)beta3.** *Exp Cell Res* 1997, **232(1)**:118-126.
8. Hannigan GE, Dedhar S: **Protein kinase mediators of integrin signal transduction.** *J Mol Med* 1997, **75(1)**:35-44.
9. Clark RA, Tonnesen MG, Gailit J, Cheresch DA: **Transient functional expression of alphaVbeta 3 on vascular cells during wound repair.** *Am J Pathol* 1996, **148(5)**:1407-1421.
10. Robbins SG, Brem RB, Wilson DJ, O'Rourke LM, Robertson JE, Westra I, Planck SR, Rosenbaum JT: **Immunolocalization of integrins in proliferative retinal membranes.** *Invest Ophthalmol Vis Sci* 1994, **35(9)**:3475-3485.
11. Yang CH, Huang TF, Liu KR, Chen MS, Hung PT: **Inhibition of retinal pigment epithelial cell-induced tractional retinal detachment by disintegrins, a group of Arg-Gly-Asp-containing peptides from viper venom.** *Invest Ophthalmol Vis Sci* 1996, **37(5)**:843-854.
12. Charteris DG: **Proliferative vitreoretinopathy: pathobiology, surgical management, and adjunctive treatment.** *Br J Ophthalmol* 1995, **79(10)**:953-960.
13. Jerdan JA, Pepose JS, Michels RG, Hayashi H, de Bustros S, Sebag M, Glaser BM: **Proliferative vitreoretinopathy membranes. An immunohistochemical study.** *Ophthalmology* 1989, **96(6)**:801-810.
14. Elnor SG, Elnor VM: **The integrin superfamily and the eye.** *Invest Ophthalmol Vis Sci* 1996, **37(5)**:696-701.
15. Anderson DH, Johnson LV, Hageman GS: **Vitronectin receptor expression and distribution at the photoreceptor-retinal pigment epithelial interface.** *J Comp Neurol* 1995, **360(1)**:1-16.
16. Anderson DH, Guerin CJ, Matsumoto B, Pfeffer BA: **Identification and localization of a beta-1 receptor from the integrin family in mammalian retinal pigment epithelial cells.** *Invest Ophthalmol Vis Sci* 1990, **31(1)**:81-93.
17. Weller M, Wiedemann P, Bresgen M, Heimann K: **Vitronectin and proliferative intraocular disorders. II. Expression of cell surface receptors for fibronectin and vitronectin in periretinal membranes.** *Int Ophthalmol* 1991, **15(2)**:103-108.
18. Pfaff M, Tangemann K, Muller B, Gurrath M, Muller G, Kessler H, Timpl R, Engel J: **Selective recognition of cyclic RGD peptides of NMR defined conformation by alpha IIb beta 3, alpha V beta 3, and alpha 5 beta 1 integrins.** *J Biol Chem* 1994, **269(32)**:20233-20238.
19. Healy JM, Murayama O, Maeda T, Yoshino K, Sekiguchi K, Kikuchi M: **Peptide ligands for integrin alpha v beta 3 selected from random phage display libraries.** *Biochemistry* 1995, **34(12)**:3948-3955.
20. Koivunen E, Gay DA, Ruoslahti E: **Selection of peptides binding to the alpha 5 beta 1 integrin from phage display library.** *J Biol Chem* 1993, **268(27)**:20205-20210.
21. Koivunen E, Wang B, Ruoslahti E: **Isolation of a highly specific ligand for the alpha 5 beta 1 integrin from a phage display library.** *J Cell Biol* 1994, **124(3)**:373-380.
22. Ruoslahti E: **RGD and other recognition sequences for integrins.** *Annu Rev Cell Dev Biol* 1996, **12**:697-715.
23. Ponce ML, Nomizu M, Kleinman HK: **An angiogenic laminin site and its antagonist bind through the alpha(v)beta3 and alpha5beta1 integrins.** *Faseb J* 2001, **15(8)**:1389-1397.
24. Cox D, Aoki T, Seki J, Motoyama Y, Yoshida K: **The pharmacology of the integrins.** *Med Res Rev* 1994, **14(2)**:195-228.
25. Hoffman S, Gopalakrishna R, Gundimeda U, Murata T, Spee C, Ryan SJ, Hinton DR: **Verapamil inhibits proliferation, migration and protein kinase C activity in human retinal pigment epithelial cells.** *Exp Eye Res* 1998, **67(1)**:45-52.
26. Freshny RI: **Animal cell culture: a practical approach.** 2nd Ed. edition. Oxford, England, UK, IRL-Press; 1992.
27. Clark EA, Brugge JS: **Integrins and signal transduction pathways: the road taken.** *Science* 1995, **268(5208)**:233-239.
28. Meredith JEJ, Fazeli B, Schwartz MA: **The extracellular matrix as a cell survival factor.** *Mol Biol Cell* 1993, **4(9)**:953-961.
29. Taga T, Suzuki A, Gonzalez-Gomez I, Gilles FH, Stins M, Shimada H, Barsky L, Weinberg KI, Laug WE: **alpha v-Integrin antagonist EMD 121974 induces apoptosis in brain tumor cells growing on vitronectin and tenascin.** *Int J Cancer* 2002, **98(5)**:690-697.
30. Boudreau N, Sympson CJ, Werb Z, Bissell MJ: **Suppression of ICE and apoptosis in mammary epithelial cells by extracellular matrix.** *Science* 1995, **267(5199)**:891-893.
31. Tezel TH, Del Priore LV: **Reattachment to a substrate prevents apoptosis of human retinal pigment epithelium.** *Graefes Arch Clin Exp Ophthalmol* 1997, **235(1)**:41-47.
32. Akiyama SK, Nagata K, Yamada KM: **Cell surface receptors for extracellular matrix components.** *Biochim Biophys Acta* 1990, **1031(1)**:91-110.
33. Sastry SK, Horwitz AF: **Integrin cytoplasmic domains: mediators of cytoskeletal linkages and extra- and intracellular initiated transmembrane signaling.** *Curr Opin Cell Biol* 1993, **5(5)**:819-831.
34. Leavesley DI, Schwartz MA, Rosenfeld M, Cheresch DA: **Integrin beta 1- and beta 3-mediated endothelial cell migration is triggered through distinct signaling mechanisms.** *J Cell Biol* 1993, **121(1)**:163-170.
35. Kohn EC, Felder CC, Jacobs W, Holmes KA, Day A, Freer R, Liotta LA: **Structure-function analysis of signal and growth inhibition by carboxyamido-triazole, CAI.** *Cancer Res* 1994, **54(4)**:935-942.
36. Friedlander M, Brooks PC, Shaffer RW, Kincaid CM, Varner JA, Cheresch DA: **Definition of two angiogenic pathways by distinct alpha v integrins.** *Science* 1995, **270(5241)**:1500-1502.
37. Brooks PC, Klemke RL, Schon S, Lewis JM, Schwartz MA, Cheresch DA: **Insulin-like growth factor receptor cooperates with integrin alpha v beta 5 to promote tumor cell dissemination in vivo.** *J Clin Invest* 1997, **99(6)**:1390-1398.
38. Hinton DR, He S, Graf K, Yang D, Hsueh WA, Ryan SJ, Law RE: **Mitogen-activated protein kinase activation mediates PDGF-directed migration of RPE cells.** *Exp Cell Res* 1998, **239(1)**:11-15.

### Pre-publication history

The pre-publication history for this paper can be accessed here:

<http://www.biomedcentral.com/1471-2415/5/16/prepub>

Publish with **BioMed Central** and every scientist can read your work free of charge

"BioMed Central will be the most significant development for disseminating the results of biomedical research in our lifetime."

Sir Paul Nurse, Cancer Research UK

Your research papers will be:

- available free of charge to the entire biomedical community
- peer reviewed and published immediately upon acceptance
- cited in PubMed and archived on PubMed Central
- yours — you keep the copyright

Submit your manuscript here:  
[http://www.biomedcentral.com/info/publishing\\_adv.asp](http://www.biomedcentral.com/info/publishing_adv.asp)

